



**Activity/Project Title:** Scavenger Hunt: Capital Cities of the United States

**Subject Area:** History/Social Science      **Grade Level:** 5th

**Lesson Length/Number of Sessions:** 2 50 min lessons

**Content (Concept/Understanding or Skill/Ability):** Linking History and Geography

(Why are capitals located in that place?); Research

**Prerequisites:** Basics of Google Search, Google Earth, and Google Maps

Google Earth Tutorials

<http://earth.google.com/intl/en/userguide/v4/tutorials/index.html>

**State Standards addressed:** History/Social Science 5.9 Student know the location of

the current 50 states and the names of their capitals.

**NETS\*S (National Educational Technology Standards\*Students):** 2a, 2b, 3c, 3d

**Instructional Goals & Objectives:**

- Determine the keys words for a Google Search.
- Create placemarks of several of the state capitals.
- Locate the streets surrounding a capitol building.
- Search out media that thoroughly describes a capital city
- Measure the distances of several capital cities from Washington, D.C. (*optional or in conjunction with math teacher*)

**Description of Activity/Procedure (Introduction – Direct Instruction – Guided Practice/Check for Understanding – Independent Practice – Closure):**

- View a video about a state capital. Discuss.
- Before beginning the Scavenger Hunt, do one example together. Example: The mayor of this capital city is T. M. Franklin Cownie.
- Talk about key words for a Google Search. You should identify the city as Des Moines, Iowa.
- Review how to use the Placemark tool by plotting Des Moines on Google Earth.
- Review how to use Google Maps to find streets. Use the state capitol of Des Moines as the example - Between E 9th and E 12th Streets and E Walnut St. and E Grand Avenue
- As a group, write a clue for another capital city.
- After completing the Scavenger Hunt, have students draw the names of other state

capitals to write clues for and to plot on Google Earth. All 50 states should be included.

- Answer the question: Why are state capitals located in that specific location?
- Use the ruler tool in Google Earth to determine which capital is the farthest and which is the nearest to Washington, D.C.

### **Materials/Equipment Needed:**

Computers with Internet access and Google Earth downloaded.

Computer connected to a projector in the classroom or in a computer lab.

### **Video Links:**

Boise, Idaho

<http://video.google.com/videosearch?q=United+States+Capital+Cities&hl=en&siteearch=#q=United%20States%20Capital%20Cities&hl=en&sitearch=video.google.com&start=10>

Sacramento, California

<http://video.google.com/videosearch?q=United+States+capital+cities&hl=en&sitearch=video.google.com#q=Sacramento%2C%20CA&hl=en&sitearch=&start=40>

Olympia, Washington

<http://video.google.com/videosearch?q=United+States+capital+cities&hl=en&sitearch=video.google.com#q=Olympia%2C%20WA&hl=en&sitearch=&start=0>

### **Assessment/Evaluation:**

- Correctness of placemarks and surrounding streets
- Ability to comfortably use Google Search, Earth, and Maps
- Quality of the media (images, video) found to describe various state capitals
- Use of the ruler tool to correctly measure distances

### **Follow-up Activities/Next Steps/Future Lessons:**

- Research information about a state.
- Create a Google Docs Presentation about the state.
- Use a Google Earth screen shot as the background for basic state facts and figures.
- Measure other distances with the ruler tool.

### **Contributor:**

Donna Axelson  
Cupertino, CA

### **Additional Resources:**

#### **Scavenger Hunt**

#### **United States Capital Cities**

Use Google Search to help identify each state capital.

1. The Willamette River runs through this capital city.
2. This state capital hosted the 1996 Summer Olympic Games.
3. The Broncos play football in this capital city.
4. Harvard is in a suburb of this state capital.
5. This capital city is located in Leon County.
6. The translation for this capital's name is "Sheltered Bay".
7. This capital city is across the Gastineau Channel from Douglas Island.
8. Abraham Lincoln lived in this capital city from 1837 until 1861.
9. This capital was established near Fort D.A. Russell.
10. The "First Transcontinental Railroad" linked this capital city with Sacramento, California in the 1860s.

Write clues about two or more other United States capital cities.

- 1.
- 2.
- 3.
- 4.

Plot these capitals on Google Earth.

Which capital city is the farthest from Washington, D.C.? Which is the closest?

Use Google Maps to locate the Capitol Building and street location.

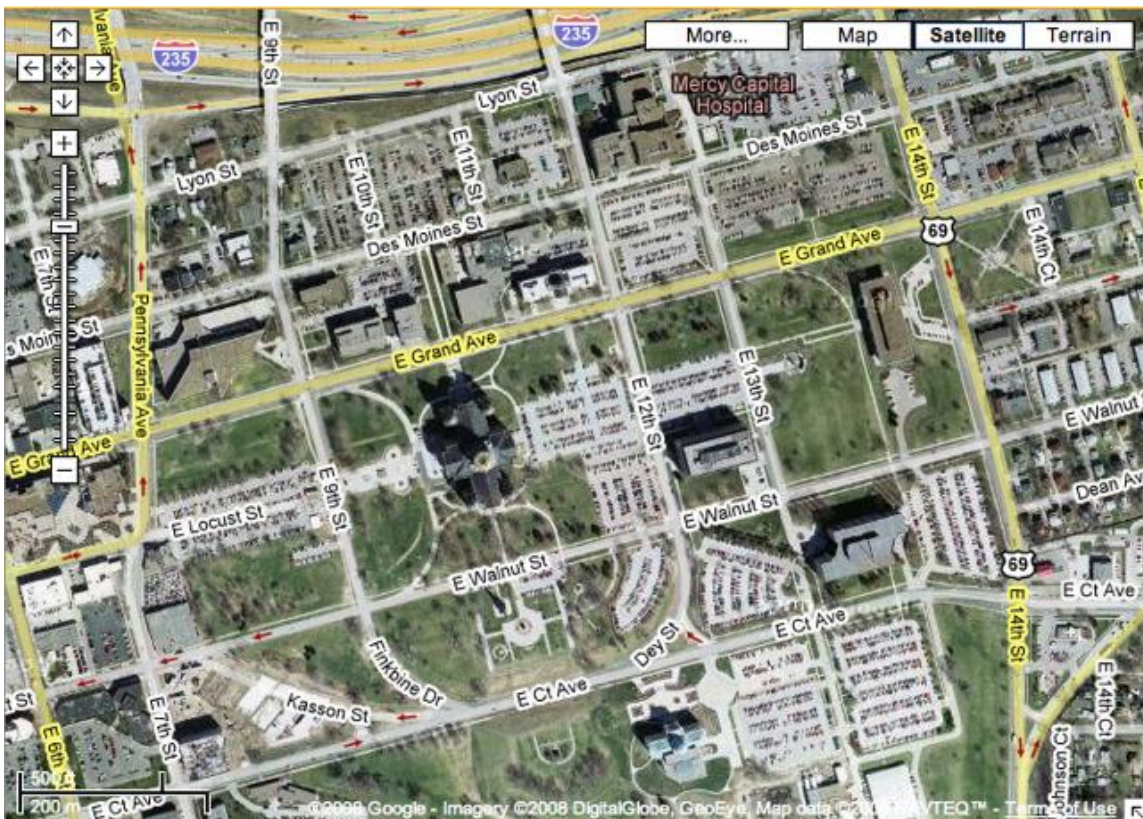
Answers:

1. Salem, Oregon
2. Atlanta, Georgia
3. Denver, Colorado
4. Boston, Massachusetts
5. Tallahassee, Florida
6. Honolulu, Hawaii
7. Juneau, Alaska
8. Springfield, Illinois
9. Cheyenne, Wyoming
10. Omaha, Nebraska

Google **Earth** shows streets and landmarks.



Google **Maps** shows streets and landmarks, too.



Or Google **Maps** shows streets without other things.

